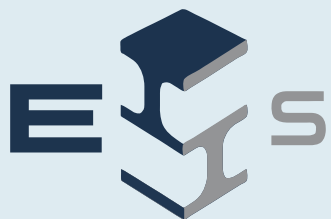


YOUR GATEWAY TO EVERYTHING IN **STEEL**



ECO STEEL AND HYDRO STRUCTURES PVT.LTD

“ A TRUSTED NAME IN STEEL DESIGN AND FABRICATION ”

ABOUT US

A full serving Steel Structure Design, Fabrication, Erection and Hydro mechanical fabricator was established in 2013 AD with the motto of giving quality steel fabrication and design/detailing works to our clients. We specialize in design, fabrication, erection and installation of any kind of steel structure. Our workshop office is located in Bharatpur, Chitwan and project & design office is located in Kathmandu-16, Nepal



A COMPANY BUILT TO MAKE **STEEL**

WE SPECIALIZE IN

STEEL BUILDINGS
PEB BUILDINGS
HYDRO MECHANICAL FABRICATION
STEEL BRIDGES AND TRUSSES
TOWERS AND POLES
TRANSMISSION LINE
STEEL DESIGN AND ENGINEERING
BIM / STEEL DETAILING

CONSTRUCTION EASIER

BRAND IDENTITY

RELIABILITY

Everything we do starts with our core value "RELIABILITY" that reflects our clients unique expectations and utmost trust that we will never discredit at any cost.

ATTENTIVE

Our utmost priority in steel business is attention to detail. Because in steel small details matter.

INTEGRITY

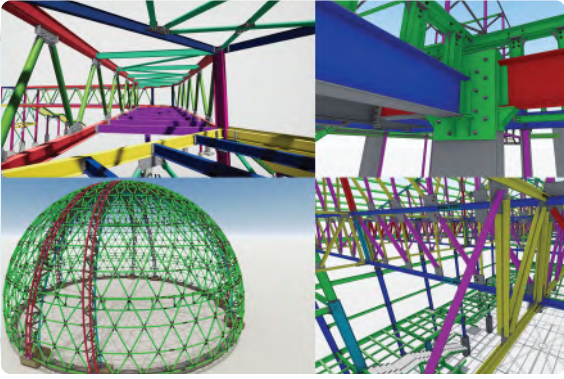
Against the cut throat competition in the market ECOSH always keeps honesty and loyalty intact. Giving 100% with full transparency and integrity in a project is our topmost priority.

STABILITY

ECOSH's core competence is the human resource. We are unique in retaining our core human value chain and utilization of local Nepalese manpower to help prosper sustainably

OUR MISSION

To be a leading structural steel design and fabrication company in the Nepalese market as well as outreach the global market and be a reliable outfit providing efficient and cost effective design, fabrication and installation to our clients.

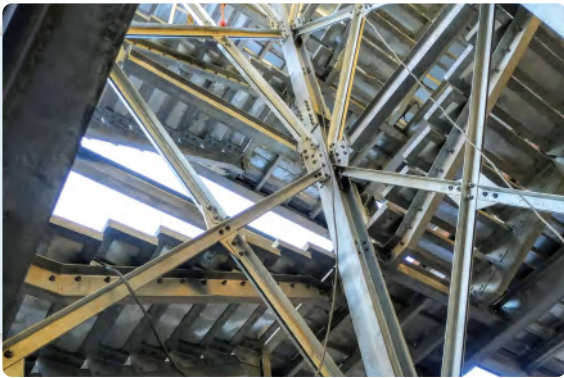


DESIGN AND ENGINEERING

- Analysis and design of any complexity of steel structure
- Steel platework analysis and detailing.
- Detailing of steel elements with shop drawings and 3d visualization and animation of steel structure.

HYDRO-POWER WORKS

- Headrace, penstock pipeline and bifurcation joints.
- Hydromechanical gates and spillway gates.
- Expansion joints and installation
- Trash racks, power house cranes and structure.



STEEL MULTISTOREY BUILDING

- Box, plated, builtup, cellular- columns, beams, joists and rafters
- Corrugated deck sheet, precast slabs, cast insitu studded slabs
- Rigid welded/bolted or braced frame structure as per design
- Composite construction with steel and RCC.

PEB(PRE ENGINEERED BUILDING)

- Single span portal frames upto 50 metres or as per design
- Aircraft hangars , warehouses and industrial sheds
- Roofing, cladding, sheeting, insulation, guttering, works
- C-purlins/Z-purlins, grits and eaves/ridge struts
- Crane Systems, Mezannine Systems





ROOF TRUSSES

- Simple trusses, spatial trusses, cantilever canopies, fuel station trusses, futsal and sports arenas etc.
- Seepage proof roofing and guttering work

STEEL BRIDGES

- Plate girder bridges, box girder bridges, trussed bridges, portal bridges, walkway bridges etc
- Sand blasting and Zinc galvanization as per clients demand
- Temporary works for bridge erection



RETROFITTING AND REHABILITATION

- Retrofitting and strengthening of earthquake damaged RCC and steel structures using steel sections and plates.
- Design, fabrication and installation as per damage evaluation and load assessment.
- Experts in HILTI application for proper anchorage with RCC

INSPECTION AND QUALITY ASSURANCE

- Final technical audits for HP projects.
- Q&A and inspection documents for HP projects.
- Consulting, Detailing, Shop drawings and inspection and quality control of any kind of steel related projects.



Upper Mai Hydropower Project Pipeline Work (12MW)

- Installation of Pipeline work at Mai Khola crossing, Mabu, Ilam
- Head Race & penstock pipeline of 1050 meters installed.



Upper Mai Hydromechanical Gates and Power House Structure (12 MW, Mabu, Ilam)

- Fabrication and Installation of power house steel structure (Building frame and roof structure)
- Fabrication and Installation of hydromechanical gates



Upper Mai C Project (9.6 MW)

- Fabrication & Installation of penstock pipeline
- Design, fabrication & installation of hydraulic gates



Lower Solu Hydro Electric Project (82 MW)

- Fabrication & installation of roof structure and cladding for Lower Solu Hydro Electric Project .



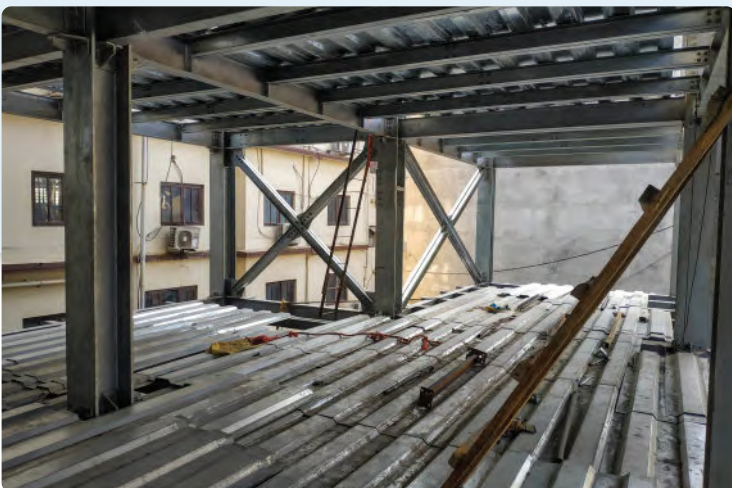
LOD Lord Of Drinks Theatre Club house at Thamel

- Construction of steel framed closed auditorium for a night club and event hub in Thamel, Kathmandu.



Buddha Air ,Corporate office, Kathmandu

-Structural design, fabrication and Installation of five storied galvanized steel framed building at jawlakhel for Buddha Air.



Sheraton Hotel Kathmandu (Phase 1)

Galvanised Structural Steel works for Blade wall and Floor Deck at Height of 80 Meters in upcoming 5 star hotel project in kathmandu.



Sheraton Hotel Kathmandu (Phase 2)

Galvanised Structural Steel works for Floor raise system, Loft Platforms, HVAC cooling tower Structures, void packing Steel Deck and other miscellaneous in upcoming 5 star hotel project in kathmandu.



Entrance Canopy at Teaching Hospital

Structural Steel works for a bespoke parametric Canopy at TU Teaching Hospital Maharajgunj under main contractor Abhinab Builders.



Vehicular Parking Structure at Valley Cold

Design and Construction of a Vehicular parking Deck for Valley Cold Store Pvt Ltd. Use of innovative connection designs to bring out aesthetic appeal of steel structure and connections.



View Deck At Manakamana Mandir

Structural detailing and galvanised structural steel fabrication works for a unique space frame deck on cliff edge of Manakamana Mandir at Kurintar, Chitwan under main contractor Best Builds.



Kaski-Sewa Hospital at Pokhara

Design and Fabrication of 4- storey steel moment frame building and emergency staircase for Kaski-Sewa Hospital at Pokhara.



Club Nexus and Cheli Thakali Pokhara

Structural Steel works for a auditorium night club with rooftop bar and swimming pool for Club Nexus at Lake-side, Pokhara. Special Steel connection design and detail required for Composite columns and bracings.



Nagarik Awaz Library Building

Structural Steel fabrication of 4- storey steel moment frame building and emergency staircase for Nagariz Awaz - a non profit organization at Nawalparasi.



New Parliament Building

Structural Steel works for Roof Structure of New Parliament building under main contractor Tundi Construction.



Curved Trussed Roof Structure

Structural Steel fabrication of a bespoke curved roof structure for a Monastery Project at Budanilkantha. Round tubular pipes of 4" OD curved and fabricated with hydraulic rollers to make in shape.



Asian Paints

-Roof Truss Equipment frame structure and other steel works completed for principle contractor Sharma & Company



Divine Healthcare Pvt. Ltd

- A Pre Engineered Portal Framed Structure was designed and executed for the company with Mezzine floor provision for a factory building of a pharmaceutical company.



MBP Plaza Complex, lake Side, Pokhara

- Structure design and execution of steel frame commercial complex (MBP Plaza) at Lakeside pokhara.



BKG Complex (Building Owned by Mr. Bal Krishna Gurung)

-Construction of three storied steel framed commercial building in steel frame at Gangabu, Kathmandu.



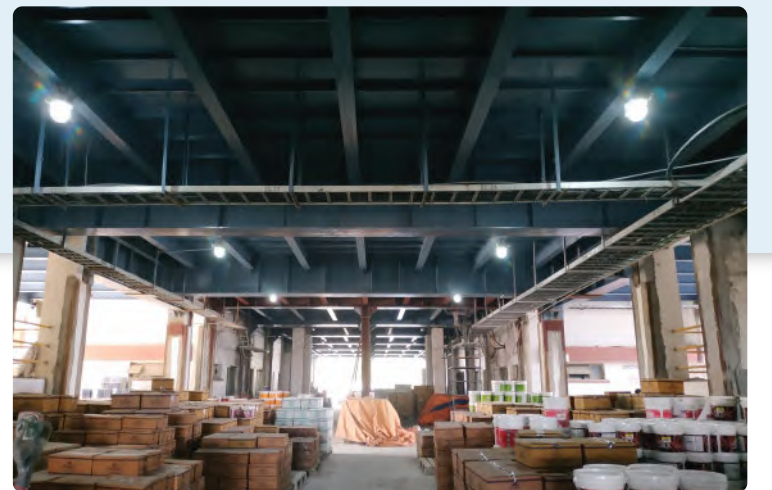
Global Agro Products Pvt Ltd, Chitwan

Steel truss frame and equipment Installation in three stage steel construction work.



Berger Jenson & Nicholson (Nepal) Pvt Ltd

-High load bearing steel deck structure for raw material storage with retrofit to supporting columns.



Valley Cold Store, Nayabazar

-Four Storied Steel Framed Building and front facade



United Nations Humanitarian Staging Centre at TIA

- Executed fabrication and erection of steel frame buildings named “Pre Fab Village” inside TIA
- Other amenities like parking, oil station, security posts, water tanks etc executed by ECOSH under principle contractor Nepal Adarsha Nirman company.



Ganatantra Smarak Park

- Smarak Monument Steel Works
- Artistic truss work for the monument was executed through the project main contractor BKOI-SKY-Banglamukhi.



National Council House of TAMU Samaj, Gangabu

- Strengthening and retrofitting work of the 5 storied building which was damaged by 2015 earthquake in Nepal. Retrofit was carried out by steel jacketing and epoxy anchor and epoxy injection grouting after due analysis of the damaged building

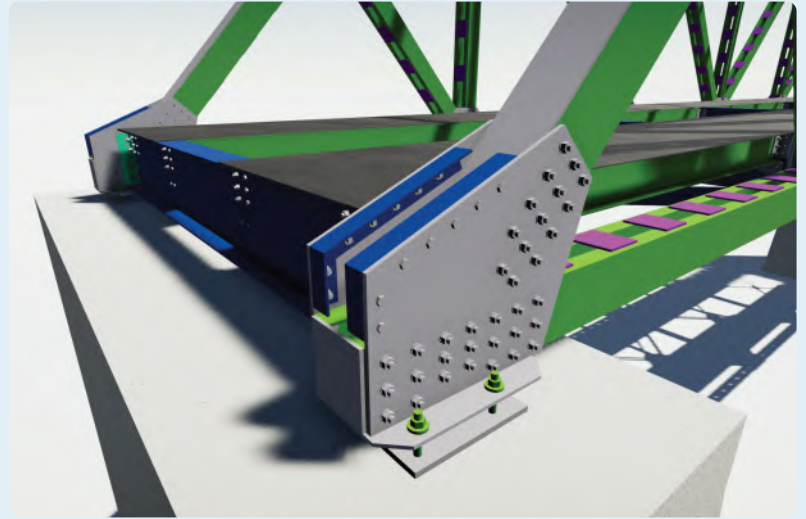
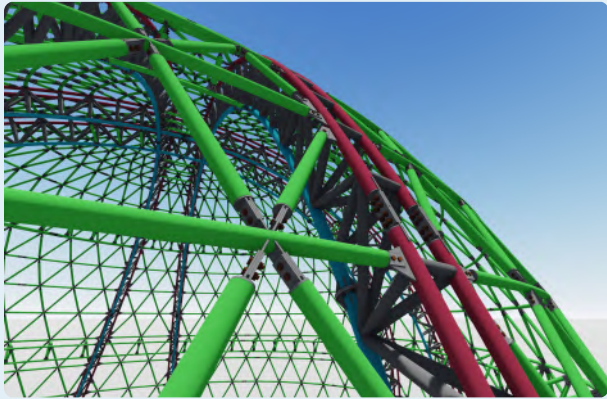


SOME OF OUR MAJOR WORKS

Steel Design and Detailing with BIM

We specialize in Steel Structure Design, BIM-Based Steel Detailing, and Fabrication Drawings using advanced software such as Tekla Structures and Autodesk Revit. Our experienced team of engineers and detailers delivers accurate, fabrication-ready models and drawings for steel projects of all sizes and complexities.

From modeling to fabrication support, we ensure every member, connection, and assembly is detailed with precision to simplify fabrication, coordination, and site execution.

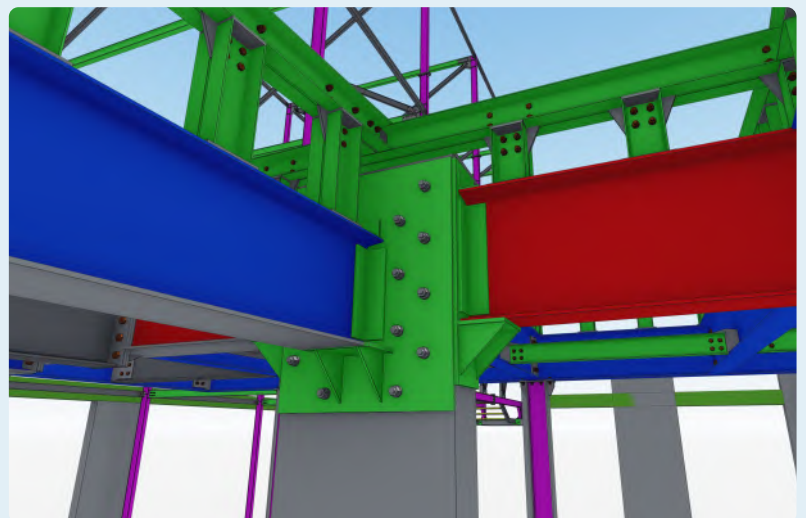


Our Services

- 3D BIM Modeling of Steel Structures
- Fabrication / Shop Drawings
- Connection Design & Connection Detailing
- Single Part & Assembly Drawings
- General Arrangement (GA) Drawings
- Steel BOQ / Material Take-Off (MTO)
- Accurate Early Steel Quantity Estimation
- Erection & Installation Drawings
- Bolt Lists, Welding Details & CNC Files
- BIM Coordination & Clash Detection

Why Choose Us ?

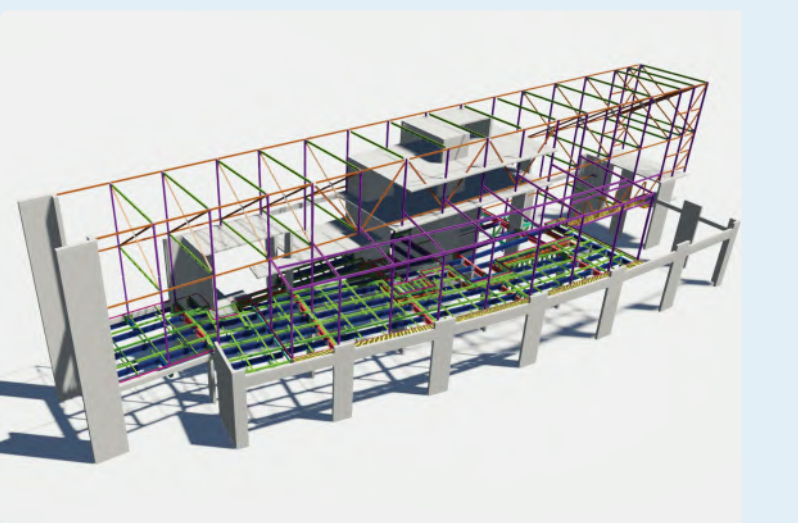
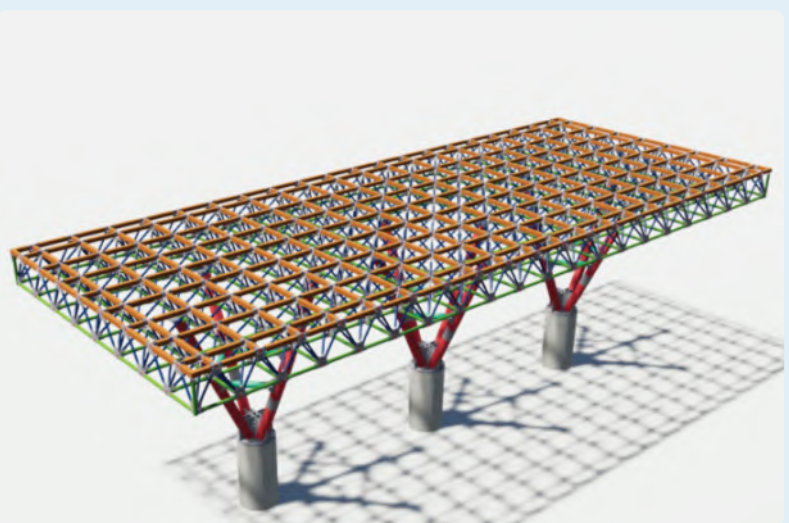
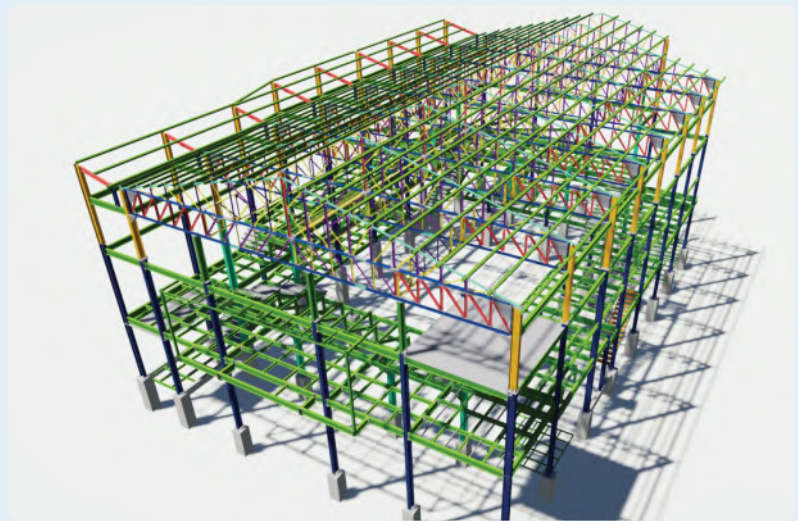
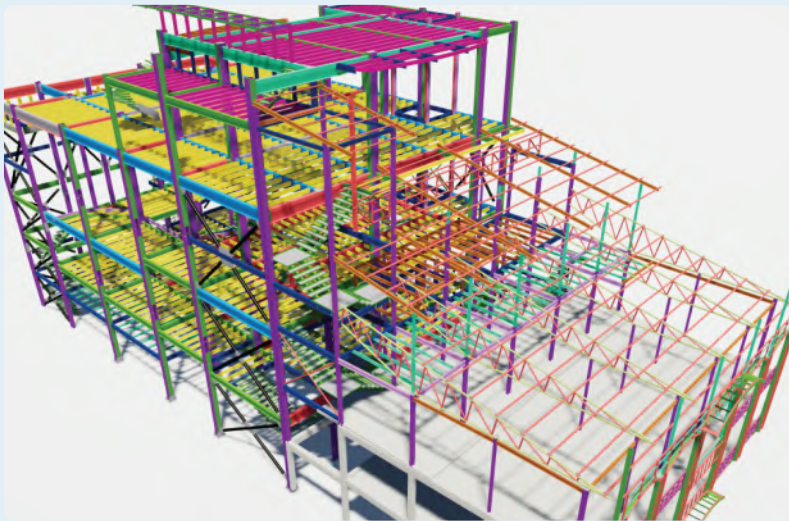
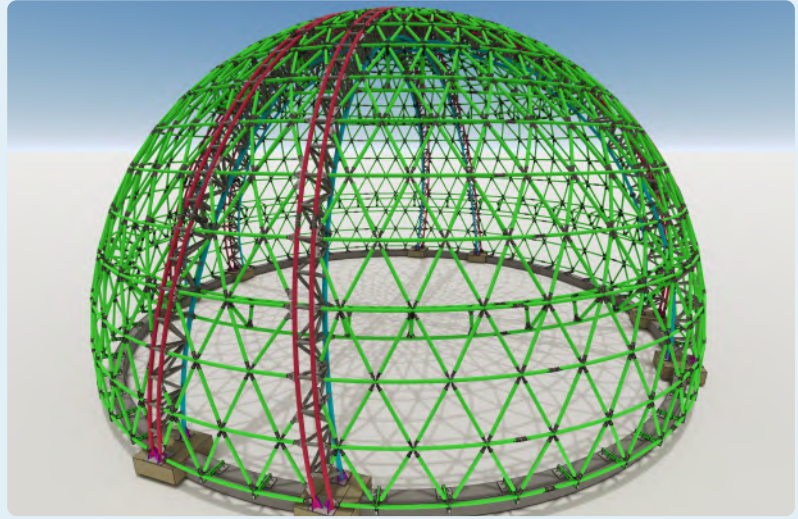
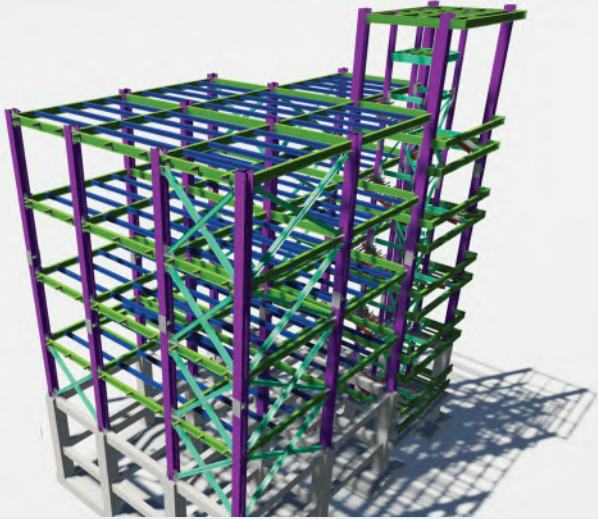
- Skilled team of steel detailers and draftsmen
- Accurate and fabrication-ready detailing
- Reduced site errors and rework
- Timely project delivery
- Capability to handle technically challenging structures
- Complete detailing support so clients can execute projects without worrying about drawing coordination and fabrication detailing



We are committed to delivering practical, accurate, and production-oriented steel detailing solutions that support smooth fabrication and successful project execution.

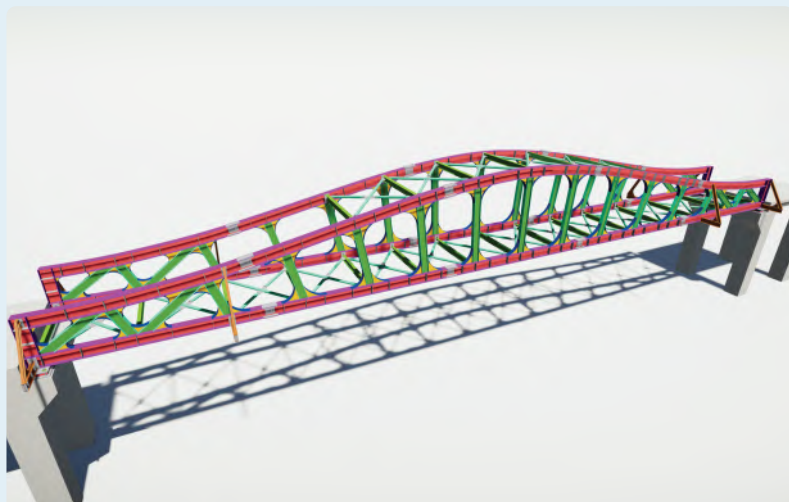
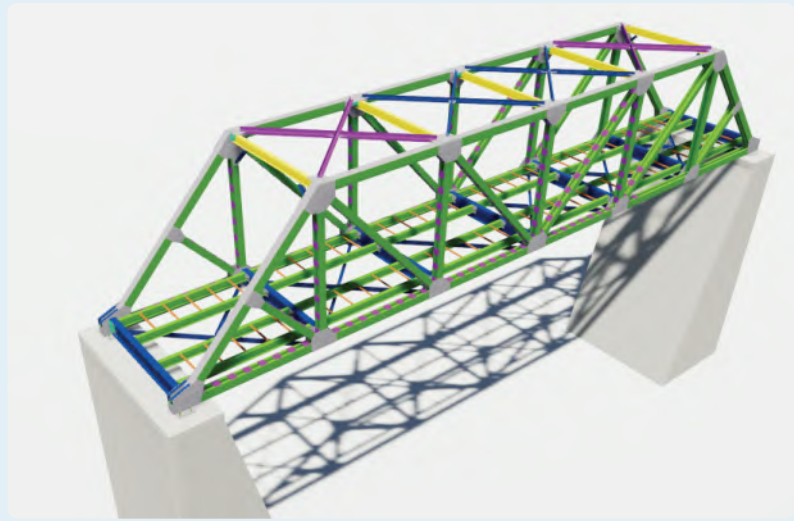
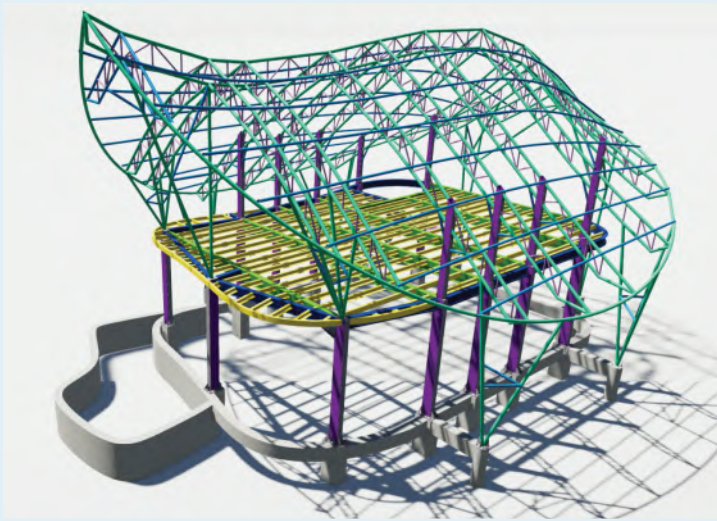
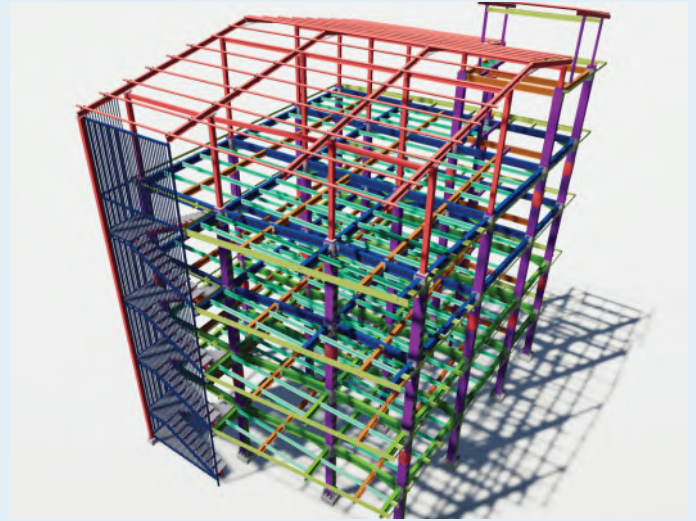
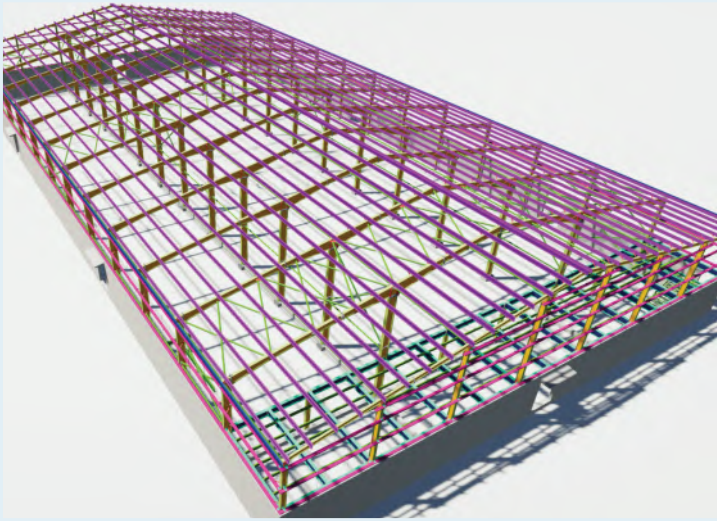
SOME OF OUR MAJOR WORKS

BIM models of Various Project Undertaken by Eco Steel.



SOME OF OUR MAJOR WORKS

BIM models of Various Project Undertaken by Eco Steel.





CONTACT DETAILS

KATHMANDU OFFICE ADDRESS

558-Erahity Marg, Kathmandu-16
Tel: 9851061848, 01-4880805

WORKSHOP ADDRESS(REGD)

Rambag, Bharatpur-5, Chitwan
Tel: 9801061848, 9801011809, 9801011810

www.ecosteelnepal.com

