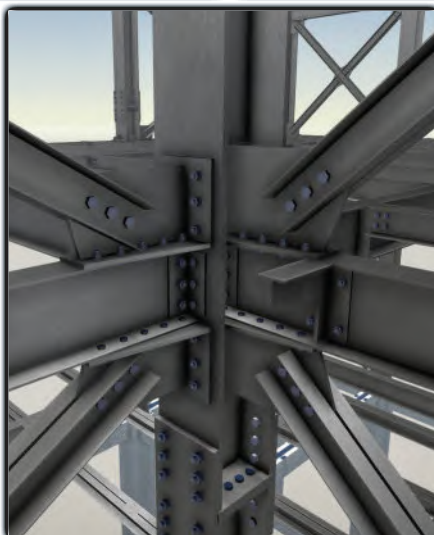


YOUR GATEWAY TO EVERYTHING IN **STEEL**

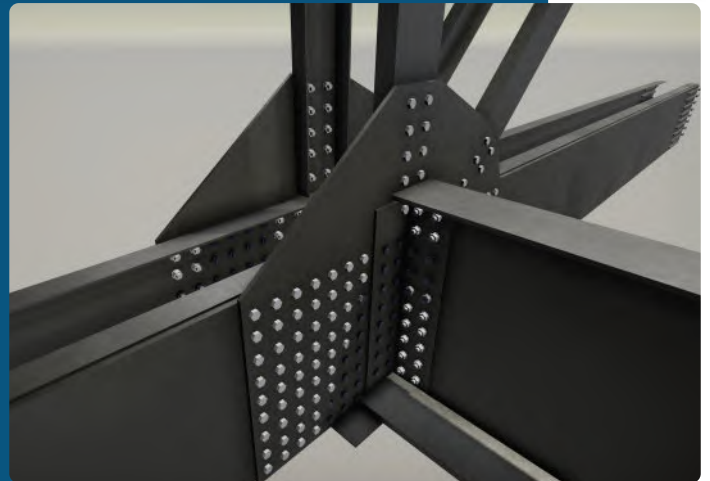


**ECO STEEL AND HYDRO STRUCTURES PVT.LTD**



## **ABOUT US**

A full serving steel structure design, fabrication, erection and hydro mechanical fabricator was established in 2013 AD with the motto of giving quality steel fabrication and design/detailing works to our clients. We specialize in design, detailing, fabrication, erection and installation of any kind of steel structure. Our workshop office is located in Bharatpur, Chitwan and project & design office is located in Kathmandu-16, Nepal



A COMPANY BUILT TO MAKE **STEEL**

## **WE SPECIALIZE IN**

STEEL BUILDINGS

PEB BUILDINGS

HYDRO MECHANICAL FABRICATION

STEEL BRIDGES AND TRUSSES

TOWERS AND POLES

TRANSMISSION LINE

STEEL DESIGN AND ENGINEERING

BIM / STEEL DETAILING

CONSTRUCTION EASIER

## **BRAND IDENTITY**

### **RELIABILITY**

Everything we do starts with our core value "RELIABILITY" that reflects our clients unique expectations and utmost trust that we will never discredit at any cost.

### **ATTENTIVE**

Our utmost priority in steel business is attention to detail. Because in steel small details matter.

### **INTEGRITY**

Against the cut throat competition in the market ECOSH always keeps honesty and loyalty intact. Giving 100% with full transparency and integrity in a project is our topmost priority.

### **STABILITY**

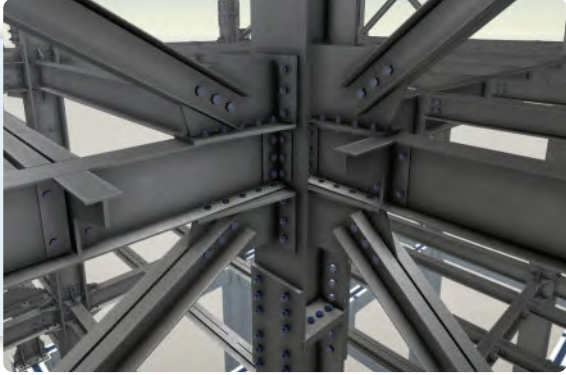
ECOSH's core competence is the human resource. We are unique in retaining our core human value chain and utilization of local Nepalese manpower to help prosper sustainably

## **OUR MISSION**

To be a leading structural steel design and fabrication company in the Nepalese market as well as outreach the global market and be a reliable outfit providing efficient and cost effective design, fabrication and installation to our clients.



ECOSH

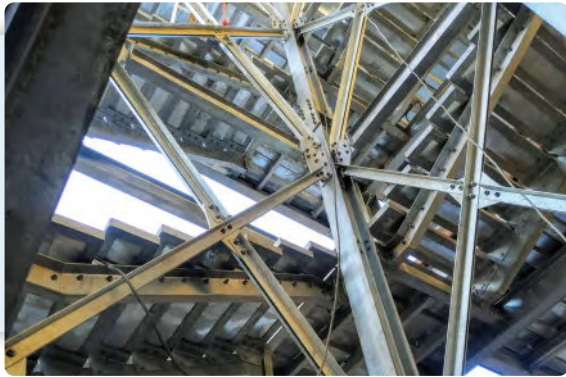


### **DESIGN AND ENGINEERING**

- Analysis and design of any complexity of steel structure
- Steel platework analysis and detailing.
- Detailing of steel elements with shop drawings and 3d visualization and animation of steel structure.

### **HYDRO-POWER WORKS**

- Headrace, penstock pipeline and bifurcation joints.
- Hydromechanical gates and spillway gates.
- Expansion joints and installation
- Trash racks, power house cranes and structure.



### **STEEL MULTISTOREY BUILDING**

- Box, plated, buildup, cellular- columns, beams, joists and rafters
- Corrugated deck sheet, precast slabs, cast insitu studded slabs
- Rigid welded/bolted or braced frame structure as per design
- Composite construction with steel and RCC.

### **PEB(PRE ENGINEERED BUILDING)**

- Single span portal frames upto 50 metres or as per design
- Aircraft hangars , warehouses and industrial sheds
- Roofing, cladding, sheeting, insulation, guttering, works
- C-purlins/Z-purlins, grits and eaves/ridge struts
- Crane Systems, Mezannine Systems







### **ROOF TRUSSES**

- Simple trusses, spatial trusses, cantilever canopies, fuel station trusses, futsal and sports arenas etc.
- Seepage proof roofing and guttering work

### **STEEL BRIDGES**

- Plate girder bridges, box girder bridges, trussed bridges, portal bridges, walkway bridges etc
- Sand blasting and Zinc galvanization as per clients demand
- Temporary works for bridge erection



### **RETROFITTING AND REHABILITATION**

- Retrofitting and strengthening of earthquake damaged RCC and steel structures using steel sections and plates.
- Design, fabrication and installation as per damage evaluation and load assessment.
- Experts in HILTI application for proper anchorage with RCC

### **INSPECTION AND QUALITY ASSURANCE**

- Final technical audits for HP projects.
- Q&A and inspection documents for HP projects.
- Consulting, Detailing, Shop drawings and inspection and quality control of any kind of steel related projects.





### Upper Mai Hydropower Project Pipeline Work (12MW)

- Installation of Pipeline work at Mai Khola crossing, Mabu, Ilam
- Head Race & penstock pipeline of 1050 meters installed.



### Upper Mai Hydromechanical Gates and Power House Structure (12 MW, Mabu, Ilam)

- Fabrication and Installation of power house steel structure ( Building frame and roof structure)
- Fabrication and Installation of hydromechanical gates





### **Upper Mai C Project ( 9.6 MW)**

- Fabrication & Installation of penstock pipeline
- Design, fabrication & installation of hydraulic gates



### **Lower Solu Hydro Electric Project (82 MW)**

- Fabrication & installation of roof structure and cladding for Lower Solu Hydro Electric Project .





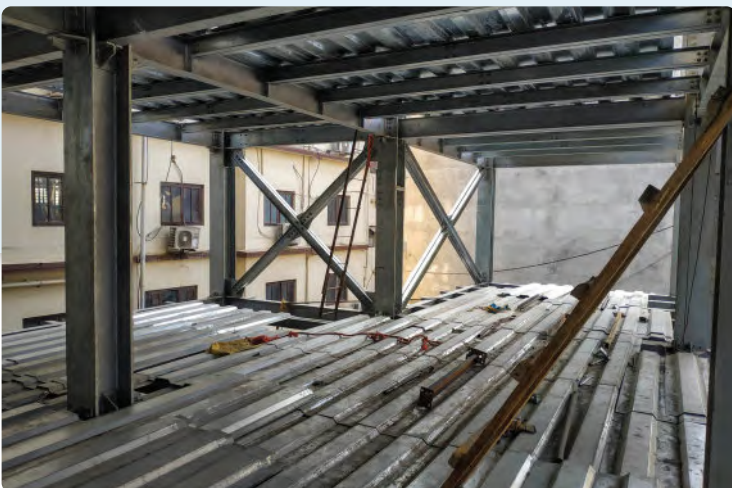
### **LOD Lord Of Drinks Theatre Club house at Thamel**

- Construction of steel framed closed auditorium for a night club and event hub in Thamel, Kathmandu.



### **Buddha Air ,Corporate office, Kathmandu**

-Structural design, fabrication and Installation of five storied galvanized steel framed building at jawlakhel for Buddha Air.





### Asian Paints

-Roof Truss Equipment frame structure and other steel works completed for principle contractor Sharma & Company



### Divine Healthcare Pvt. Ltd

- A Pre Engineered Portal Framed Structure was designed and executed for the company with Mezzine floor provision for a factory building of a pharmaceutical company.





### **MBP Plaza Complex, lake Side, Pokhara**

- Structure design and execution of steel frame commercial complex (MBP Plaza) at Lakeside pokhara.



### **BKG Complex (Building Owned by Mr. Bal Krishna Gurung)**

-Construction of three storied steel framed commercial building in steel frame at Gangabu, Kathmandu.





### **Global Agro Products Pvt Ltd, Chitwan**

Steel truss frame and equipment Installation in three stage steel construction work.



### **Berger Jenson & Nicholson (Nepal) Pvt Ltd**

-High load bearing steel deck structure for raw material storage with retrofit to supporting columns.





### **Valley Cold Store, Nayabazar**

-Four Storied Steel Framed Building and front facade



### **United Nations Humanitarian Staging Centre at TIA**

- Executed fabrication and erection of steel frame buildings named “Pre Fab Village” inside TIA
- Other amenities like parking, oil station, security posts, water tanks etc executed by ECOSH under principle contractor Nepal Adarsha Nirman company.





## **Ganatantra Smarak Park**

- Smarak Monument Steel Works
- Artistic truss work for the monument was executed through the project main contractor BKOI-SKY-Banglamukhi.



## **National Council House of TAMU Samaj, Gangabu**

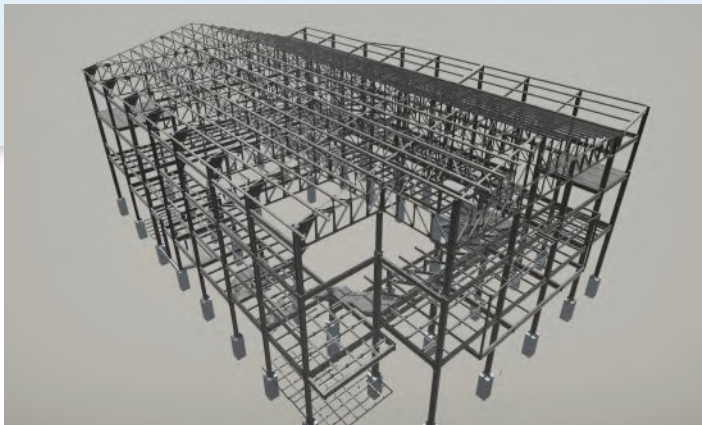
- Strengthening and retrofitting work of the 5 storied building which was damaged by 2015 earthquake in Nepal. Retrofit was carried out by steel jacketing and epoxy anchor and epoxy injection grouting after due analysis of the damaged building



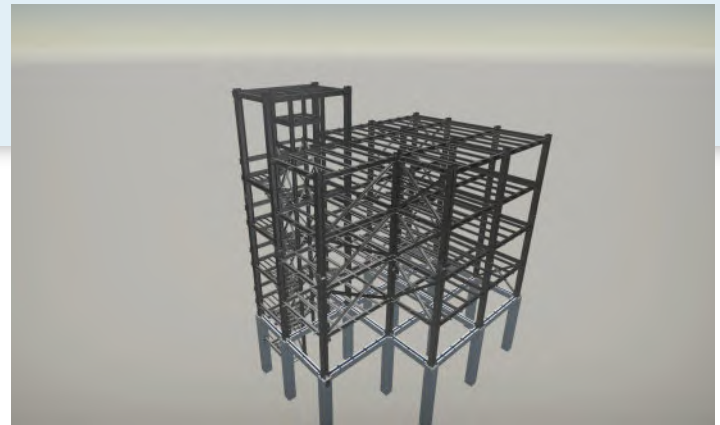


## Design and Steel Detailing Works

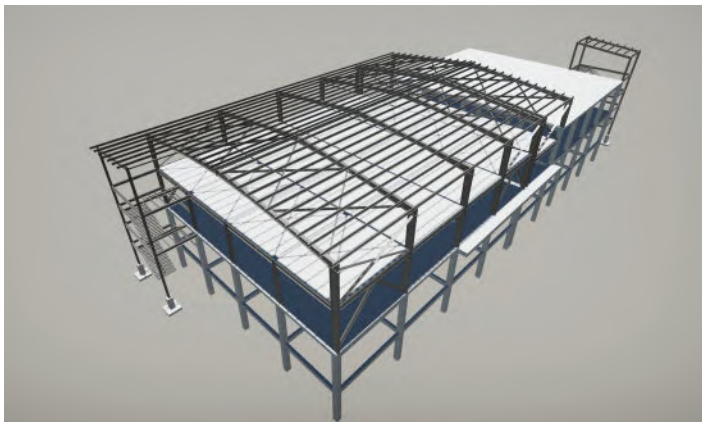
We specialize in steel structure design, drawings and 3d steel detailing. We have core team of draftsmen who can detail every inch of your steel structure. We have taken up projects that are challenging and that required technical acumen. We are always ready with skilled engineers and drafters to meet our client needs in regard to steel detailing of any size and complexity. We have done numerous drawings, detailing and designing projects, among which very few has been listed below to give our costumers an idea about our design and detailing service.



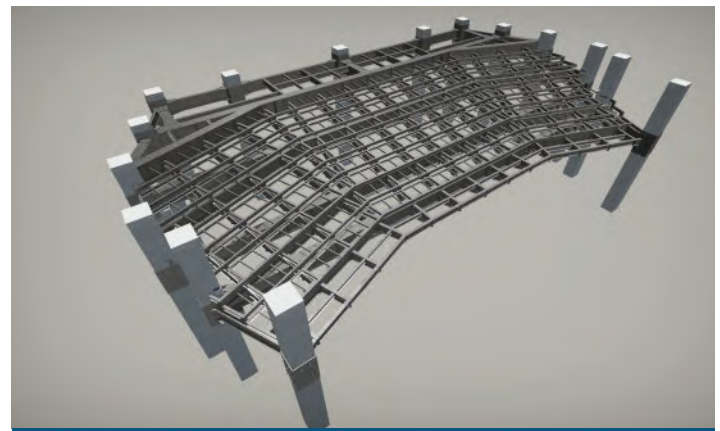
LOD Club



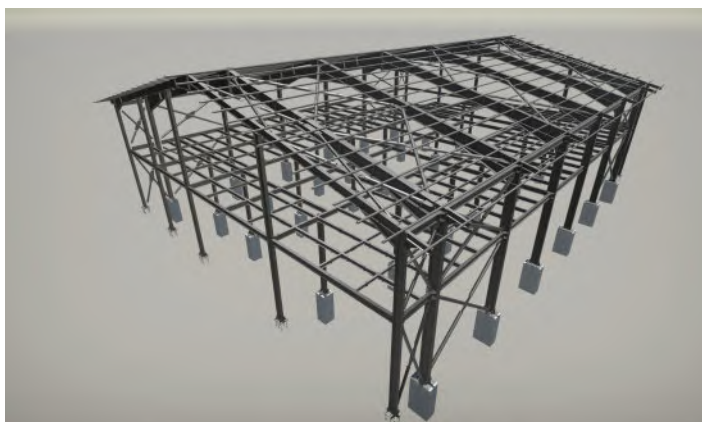
Buddha Air Head office



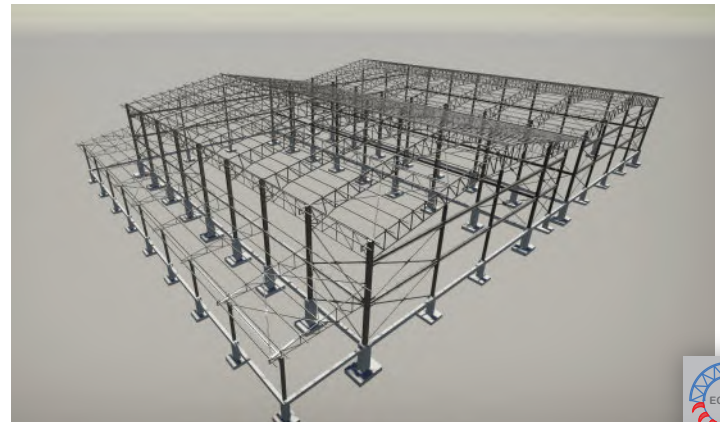
Royal Sasa Pharmaceuticals



Balcony at BICC, Butwal.



Divine Pharmaceuticals



Dairy Industry, Jhapa.



## MAJOR EXPERIENCES

SN	NAME OF PROJECT	SCOPE OF WORK	VALUME OF THE JOB HANDLED
1	Mai Valley Hydropower Pvt. Ltd Upper Mai- 12 MW Project	Hydromechanical- Works	Headreadrace PipeWork Order- 650 mtrs Penstock Pipe Line - 320 mtrs Power House Structures Plus Tunnel outlet and Blind flange plus Butterfly valve installation. Installation of Expansion joints- for Structo part also.
2	Upper Mai 'C'- 6.1 MW Project	Hydromechanical- Works	Penstock Pipe Line Work including Syphone Pipe and Intake and Tail Race Gate
3	Charanawati Hydro Power	Hydromechanical- Works	Final Technical Audit-by Er. Bidur Adhikari  Installation of 400 m landslide buried Penstock pipe line plus 200 m suction pipe damage rehab.
5	Upper Solu Hyropower (82 MW) project	Power House Roof Structures	Roof Truss and Cladding Work for the Power House
6	Melamchi Water Supply Project	Pipeline Trench - Special Type Formwork- Supied to: M/s BIKOI Builders	Special type of Form work developed for pipe line construction work for underground. Trench Excavation Form Work Supplied to M/s BIKOI Builder Pvt. Ltd
7	Butwal Bus Park Terminal Building Steel Truss Frame	Steel Truss Frame	Buspark Terminal Building Artitic truss work
8	Global Agro Products P Ltd, Chitwan	Steel Truss Frame and equipment Installation	First Phase - 2nd Phase: 3drd Phase three stage steel construction work,
9	Anmol Feeds Pvt. Ltd, Chitwan	Steel Truss Frame and equipment Installation	Appx . 110 ton of steel works plus roofing and equipment installation works and modification for 2nd hase equipment installation.
10	Ganatantra Smarak Project .	Smarak Monument Steel Works	Artistic Truss Work for the Monument was executed through the Project Main Contractor BKOI-SKY-Bagalamukhi JV
11	ASIAN PAINTS	Steel Structural Works	Appx 550 ton of steel works copleted under the leadership of Er Bidur Adhikari for Sharma & Company ( main Civil Contractor of the project)
12	Berger Jenson & Nicholson (Nepal) Pvt Ltd	Steel Structural Works and Roofing Works	Appx 32000 sft of two floor factory building constructed
13	Kantipur Poultry Breeding Rarm Factory Building at Nijgadh		12000 Sq ft Agro Farm Factory Building
14	Construction of Steel Framed Commercial Building Complex- BKG Complex	Building Owned by Mr. Bal Krishna Gurung	3 Soried Commercial Complex Building in Steel Frame at Gangabu, Kathmandu





## MAJOR EXPERIENCES

SN	NAME OF PROJECT	SCOPE OF WORK	VOLUME OF THE JOB HANDLED
15	Construction of Steel Framed Auditorium / Theatre Building in Thamel, Kathmandu	The LOD Club Building in Thamel	Auditorium / Theatre Building for a Musical and Event Happening Club in Kathmandu constructed through M/s Nurbu Construction.
16	Factory Building for a Pharmaceutical Company M/s Divine Healthcare Pvt.Ltd.	PEB Building for Divine Healthcare Pvt. Ltd	A pre Engineered Steel Framed Structure was made for the company with Mezzine floor Provision- with Plinth area of
17	5 Storied Steel Framed Buiding	Buddha Air ,Corporate office	A Pre Engineered Steel Framed Structure was made for the company with Galvanized steel and Mezzanine parking provision
18	Royal Sasa Pharmacuital Pvt. Ltd, Chitwan		Design of RCC plus Steel Structure Building
19	National Counsile House of Tamu	Tamu Samaz Main Building at Gangabu Busparkk	Strengthening and Retrofitting Work of the 5 storied Building which was Damagd by 2015 Earthquake in Nepal. Retrofit was carried out by Steel Jacketing and Epoxy Anchore and Epoxy injection grouting after due analysis of the dmaged building
20	Embassy of Srilanka Stationed Building of	Retrofitting and Rehabilitation	Building partially damaged by the 2015 Earthquake in Kathmandu was rebilitated by steel jacketing
21	Mrs Iswari Shah, Maharajung Mrs Singh	Retrofitting and Rehabilitation	The main columns as pe the analysis report and Supervision was carried out by our engineers.
22	Commercial cum Residential Building owend by som rana	Retrofitting and Rehabilitation	Commercial cum Residential Building Strengthening and Retrofitting Supervised and executed by ECOSH
23	Berger Jenson & Nicholson (Nepal) PvtLtd	Raw Material Store (RMS) Extension Project	Strengthening and Retrofitting Work with Application of Hilti Anchor Bolts Supervision and fabrication , Installation of 300 ton of Structuural Steel Work for RMS Project.
24	VA-TECH Wabag Pvt. Ltd	Solid Waste Disgester Cover and other works	25mm Thk Digester cover plate and seal plate assembly for two Solid Waste Digester at Guheswori water treatment plant.
25	Universal College of Medical Science	Stengthing and Retrofitting work and Canoy work	Building Strenthening, Canopy trusses and Firescape Structures
26	Retrofit and Rebailitation of Singdurbar West Wing	Through Project's Consutant M/s IERC- Ecocode JV	Design and Detailing Work for Steel retrofiting of the Singh Durbar West Wing, Kathmandu
27	Retrofitting Work of Bhojan Griha- A Authentic Nepalese Cousine Restrurant in Kathmandu	Strengthening and Rehabilitation work	Retrofit work of the Old Masonry Structure Building in Dillibazar , Kathmandu was done Retrofitting prior to 2015 Earthquake.



## **CONTACT DETAILS**

### **KATHMANDU OFFICE ADDRESS**

558-Erahity Marg,Kathmandu-16  
Tel: 9851061848, 01-4880805

### **WORKSHOP ADDRESS(REGD)**

Rambag, Bharatpur-5, Chitwan  
Tel: 9801061848, 9801011809, 9801011810

[www.ecosteelnepal.com](http://www.ecosteelnepal.com)



**“ A TRUSTED NAME IN STEEL DESIGN, FABRICATION AND ERECTION ”**